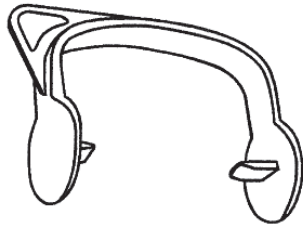
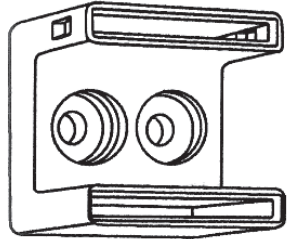


EcoLux Alta Dispenser Installation Instructions

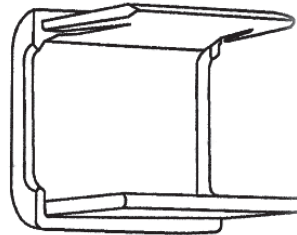
Contents:



Key to Unlock Bracket



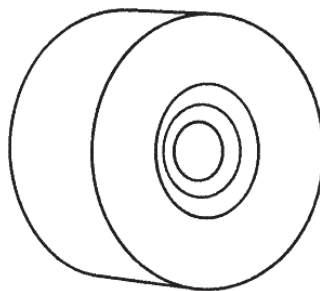
Back of Wall Bracket



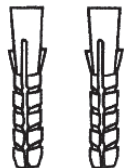
Front of Wall Bracket



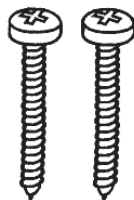
2 Screw Covers



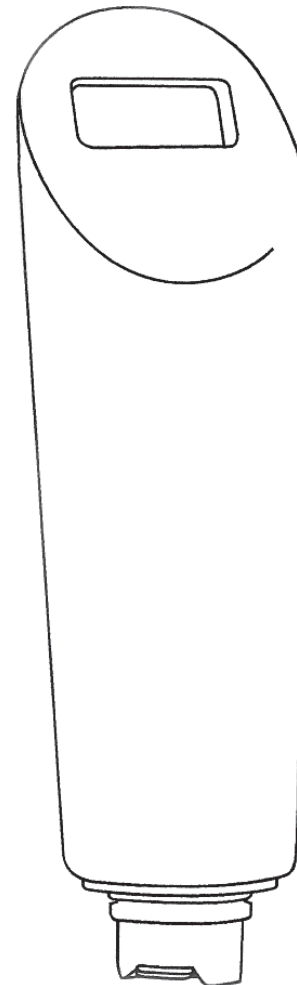
Valve Cover Cap



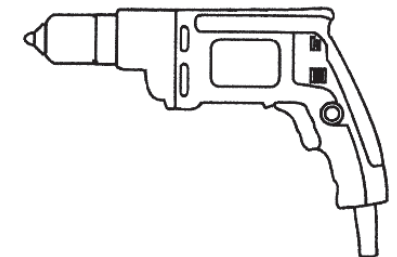
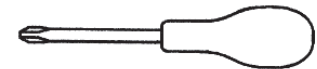
2 Fit Plugs
(6 mm)



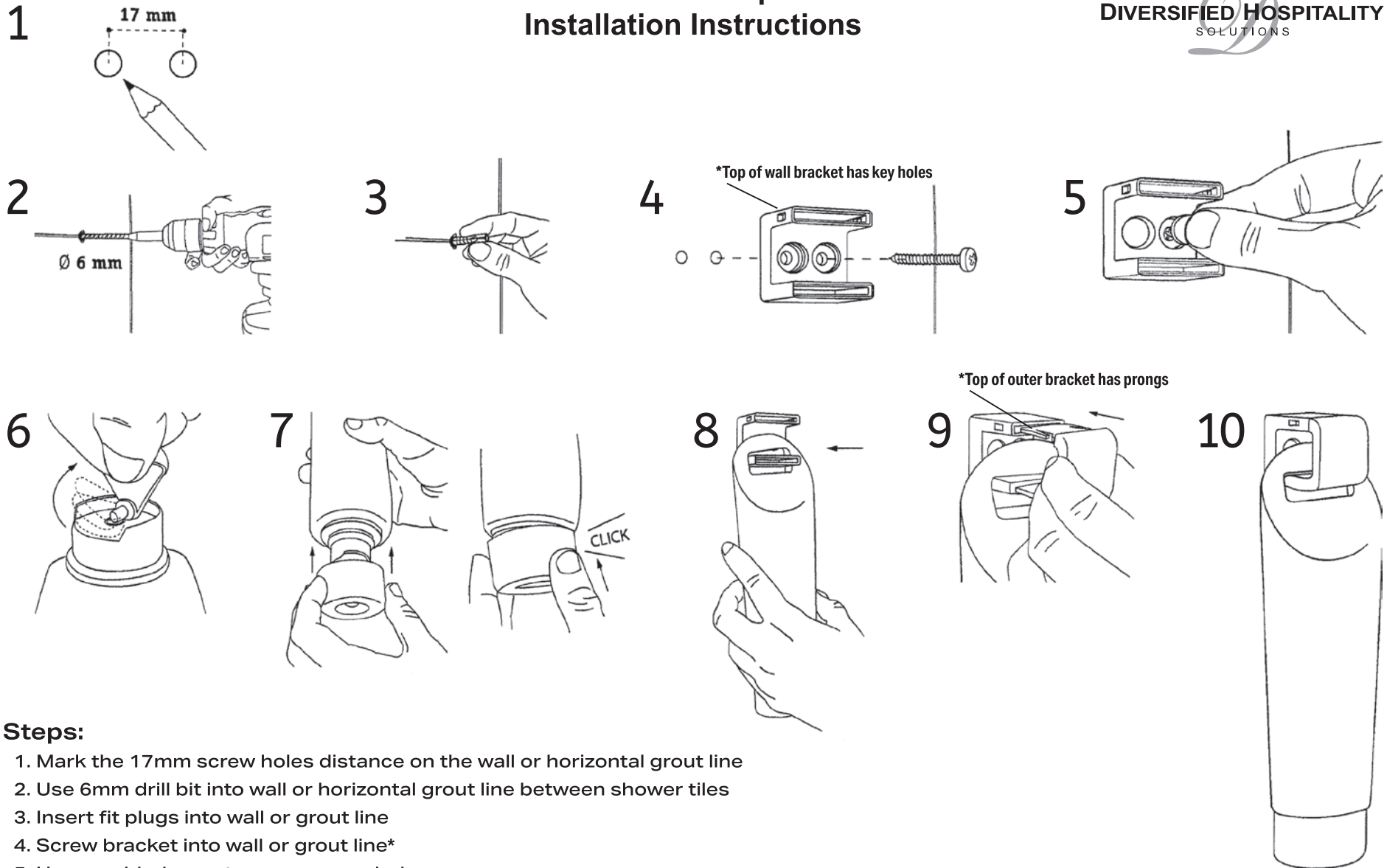
2 Screws



Tools for Installation:



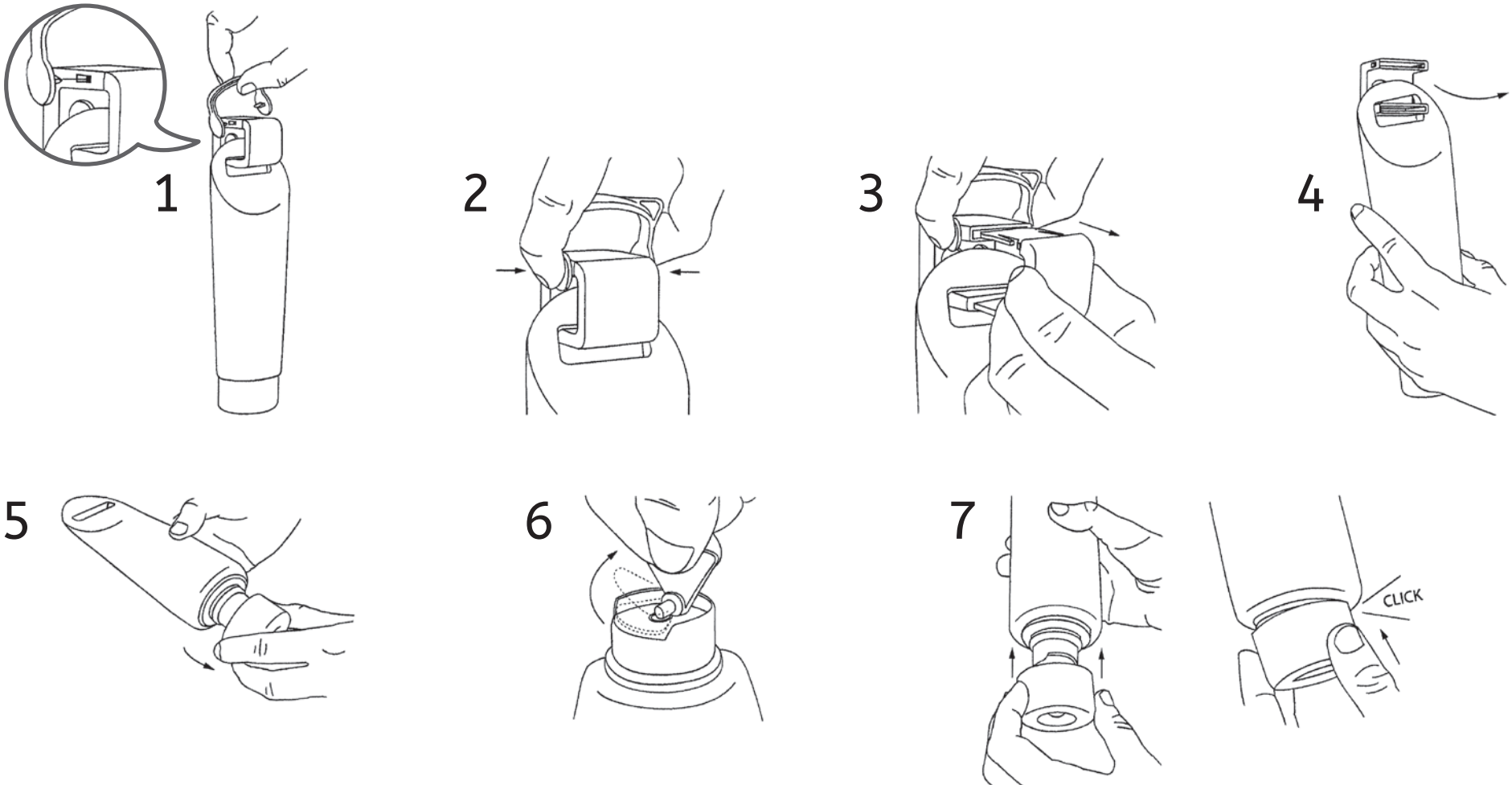
EcoLux Alta Dispenser Installation Instructions



Steps:

1. Mark the 17mm screw holes distance on the wall or horizontal grout line
2. Use 6mm drill bit into wall or horizontal grout line between shower tiles
3. Insert fit plugs into wall or grout line
4. Screw bracket into wall or grout line*
5. Use provided caps to cover screw holes
6. Pull tab off the bottom of bottle
7. Push the valve cover cap onto bottom of bottle until it clicks into place
8. Place top of bottle upright onto wall bracket
9. Push outer bracket into wall bracket until it locks into place*
10. Diagram of assembled EcoLux Alta Dispenser System

EcoLux Alta Dispenser Bottle Replacement



Steps:

1. Insert provided key into holes at top of wall bracket
2. Push key into lock
3. And pull front of wall bracket out
4. Remove used bottle from wall bracket
5. Pull valve cover cap off used bottle (**KEEP VALVE COVER CAP**)
6. Pull tab off the bottom of new bottle
7. Push the kept valve cover cap onto bottom of new bottle until it clicks into place