

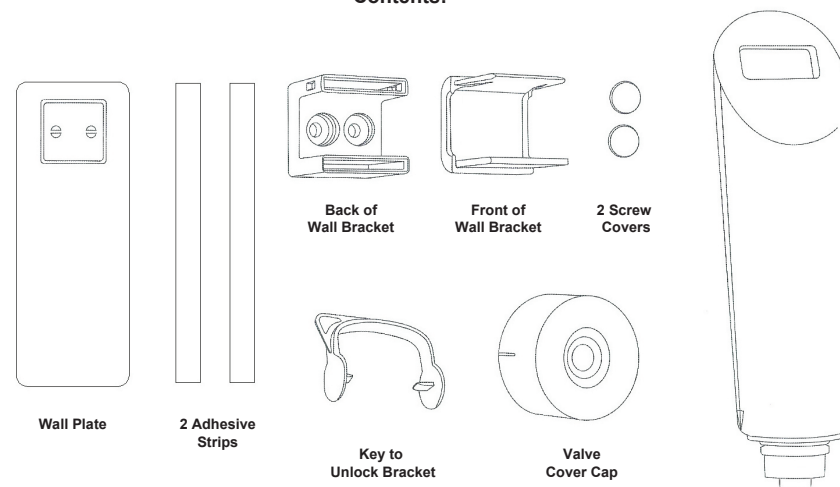


EcoLux Alta Dispenser with Wall Plate Installation Guide

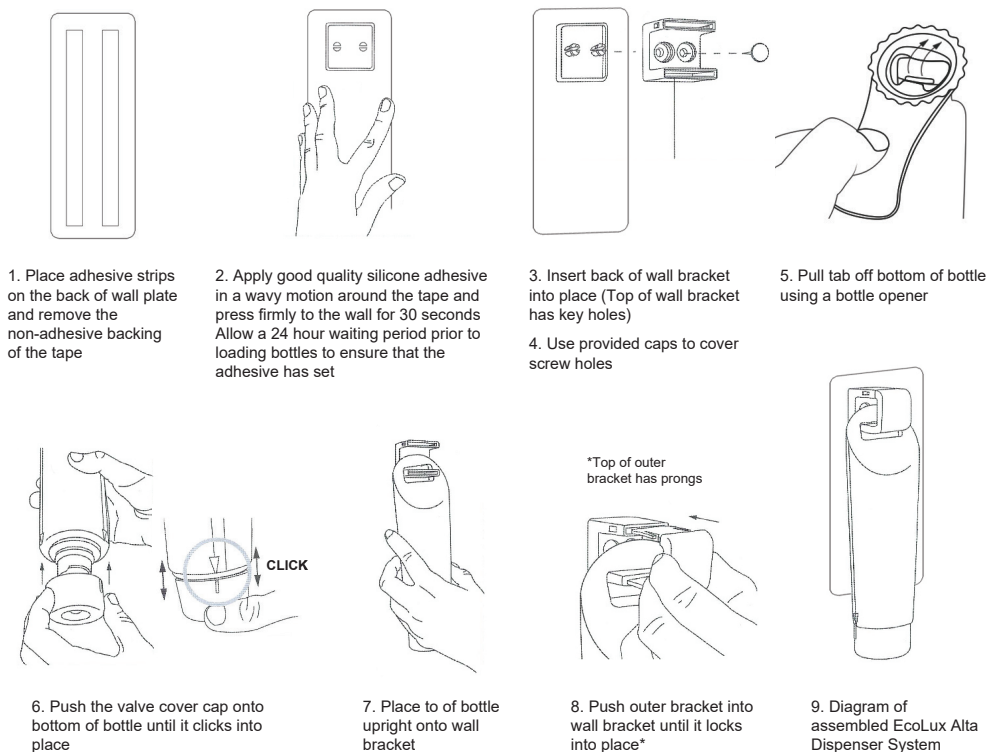
PRE-INSTALLATION STEPS

1. Select an appropriate location where bracket(s) can be secured
2. Ensure that placement will allow for suitable height above and below holder to access for refilling bottle.
3. Clean the installation surface with alcohol and wait until area has fully dried.

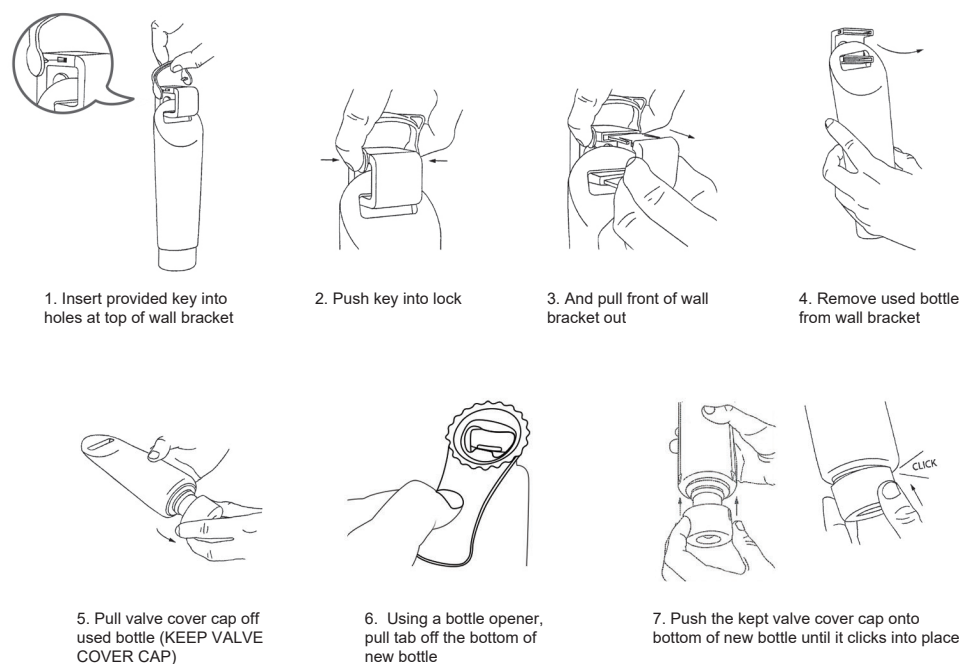
Contents:



EcoLux Alta Dispenser Installation Steps:



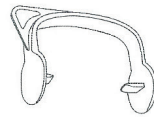
EcoLux Alta Dispenser Bottle Replacement Steps:





EcoLux Alta Dispenser Installation Guide

Contents:



Key to Unlock
Bracket



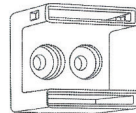
2 Screw
Covers



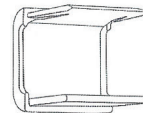
2 Fit Plugs
(6 mm)



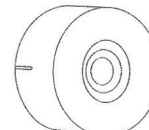
2 Screws



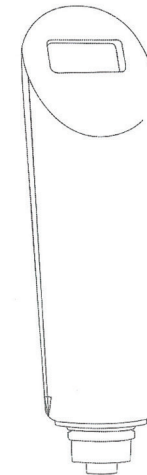
Back of
Wall Bracket



Front of
Wall Bracket



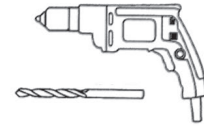
Valve
Cover Cap



Tools for Installation:



Screwdriver

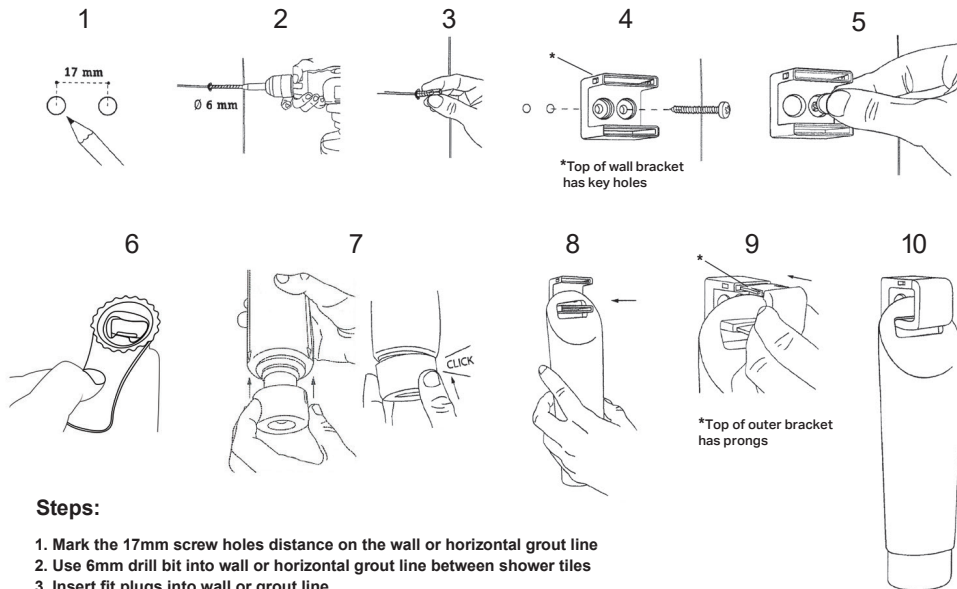


Drill & 6mm Drill Bit



Bottle Opener

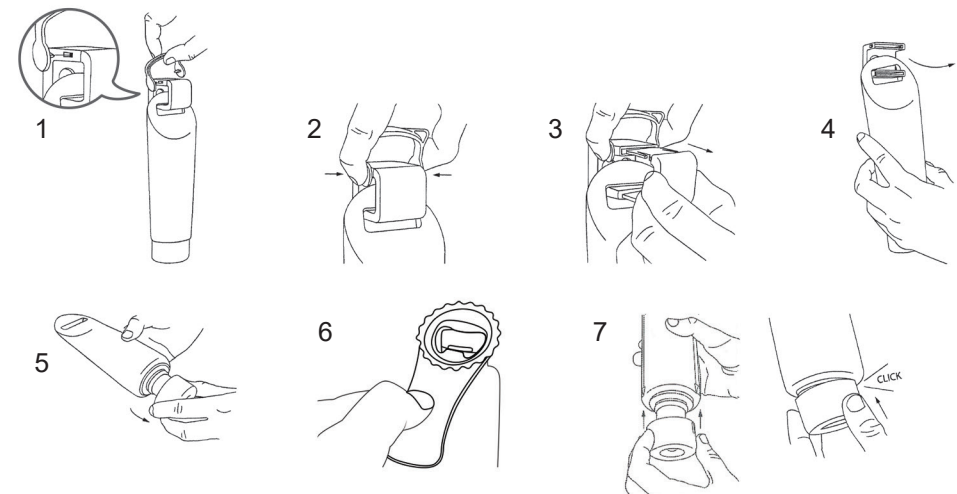
EcoLux Alta Dispenser Installation Steps:



Steps:

1. Mark the 17mm screw holes distance on the wall or horizontal grout line
2. Use 6mm drill bit into wall or horizontal grout line between shower tiles
3. Insert fit plugs into wall or grout line
4. Screw bracket into wall or grout line*
5. Use provided caps to cover screw holes
6. Open bottle using bottle opener
7. Push the valve cover cap onto bottom of bottle until it clicks into place
8. Place top of bottle upright onto wall bracket
9. Push outer bracket into wall bracket until it locks into place*
10. Diagram of assembled EcoLux Alta Dispenser System

EcoLux Alta Dispenser Bottle Replacement Steps:



Steps:

1. Insert provided key into holes at top of wall bracket
2. Push key into lock
3. And pull front of wall bracket out
4. Remove used bottle from wall bracket
5. Pull valve cover off used bottle (KEEP VALVE COVER CAP)
6. Open bottle using a bottle opener
7. Push the kept valve cover cap onto bottom of new bottle until it clicks into place